

The *Whitmore* (7-3-945)

TRADITIONAL



This beautiful family home has an air of Victorian charm. The archway over the front entrance, deep front porch, and the curved extension of the highest gable give it a timeless, elegant look.

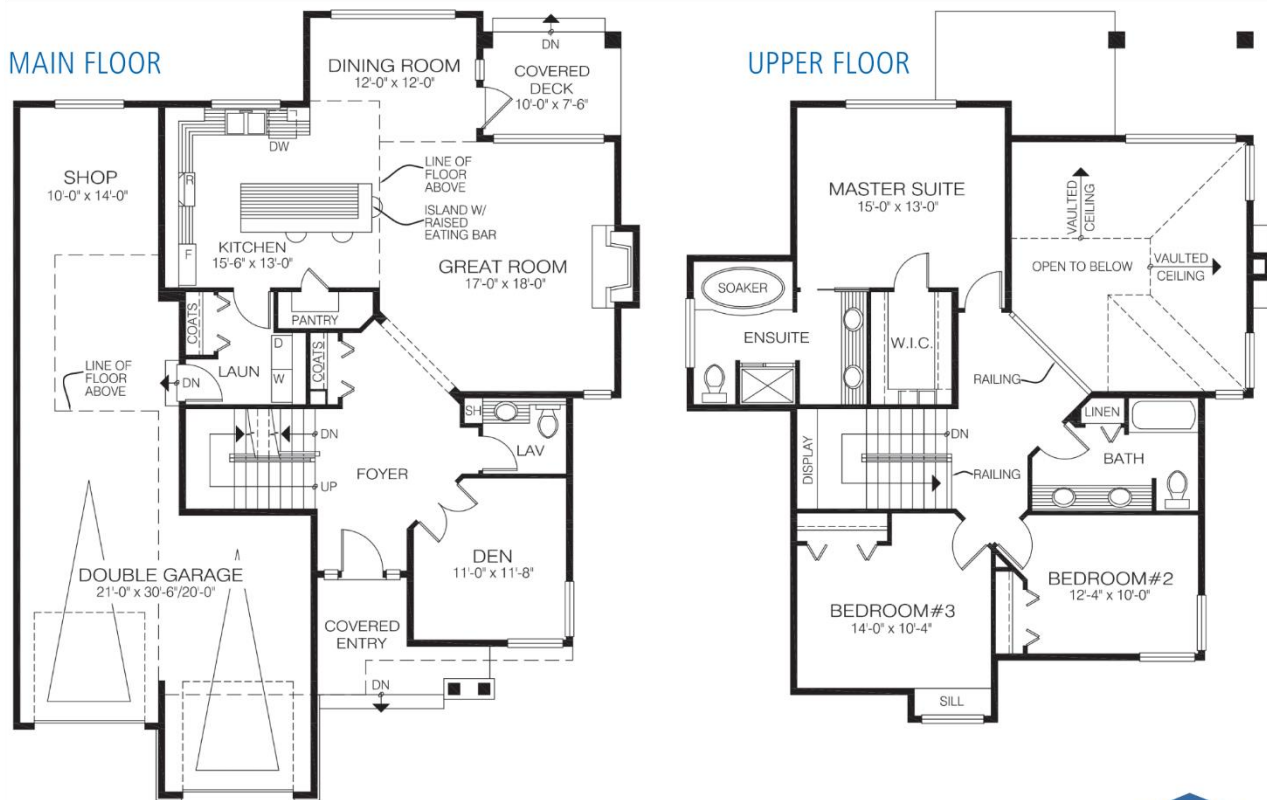
Square Footage

MAIN FLOOR	1157
UPPER FLOOR	1073
LOWER FLOOR	—
TOTAL LIVING AREA	2230
GARAGE	735
COVERED ENTRY/PORCH	151
BALCONY/DECK	—
TOTAL AREA	3116

Dimensions

WIDTH	DEPTH
46	57

Designs, Images & Plans © Jenish House Designs Limited



Contact us today for a price quote or details:
cedardesigns.com 800-728-4474

TRADITIONAL: This home package includes design, construction plans, and all the materials required to build the structure of this home to the lock-up stage. Materials include export-grade framing lumber, an engineered wood truss system, low-maintenance siding and energy-efficient windows. This design features the use of conventional construction methods. It can be modified to suit individual site conditions.

