

The Wells (7-3-819)

TRADITIONAL



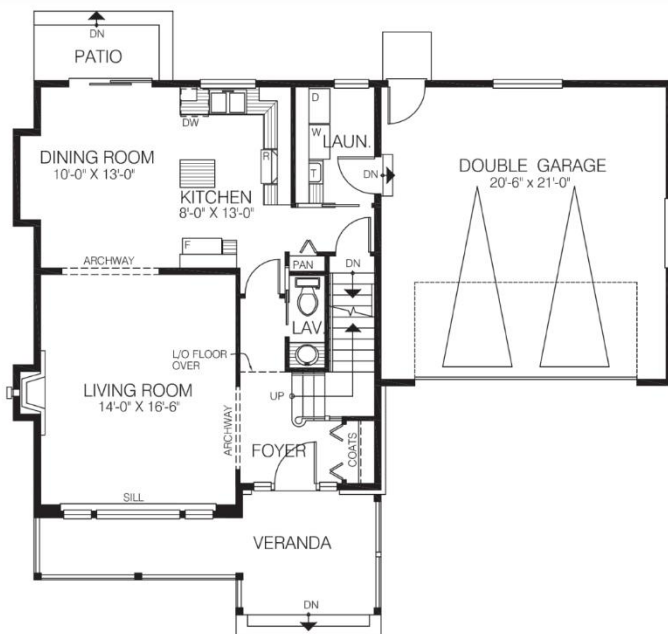
Square Footage	
MAIN FLOOR	778
UPPER FLOOR	706
LOWER FLOOR	—
TOTAL LIVING AREA	1484
GARAGE	462
COVERED ENTRY/PORCH	159
BALCONY/DECK	—
TOTAL AREA	2105

An unfinished bonus room above the garage gives this two-storey home a feature that will appeal to many families. The master suite has a sloping ceiling, which is emphasized by a large, circle-top feature window.

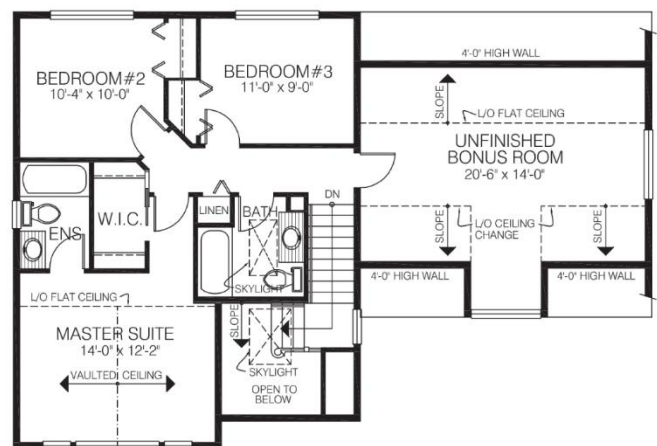
Dimensions	
WIDTH	DEPTH
46	39

Designs, Images & Plans © Jenish House Designs Limited

MAIN FLOOR



UPPER FLOOR



Contact us today for a price quote or details:
cedardesigns.com 800-728-4474

TRADITIONAL: This home package includes design, construction plans, and all the materials required to build the structure of this home to the lock-up stage. Materials include export-grade framing lumber, an engineered wood truss system, low-maintenance siding and energy-efficient windows. This design features the use of conventional construction methods. It can be modified to suit individual site conditions.

