

# The Webster (2-3-739)

TRADITIONAL



## Square Footage

MAIN FLOOR	1282
UPPER FLOOR	—
LOWER FLOOR	873
<b>TOTAL LIVING AREA</b>	<b>2155</b>
GARAGE	520
COVERED ENTRY/PORCH	127
BALCONY/DECK	55
<b>TOTAL AREA</b>	<b>2857</b>

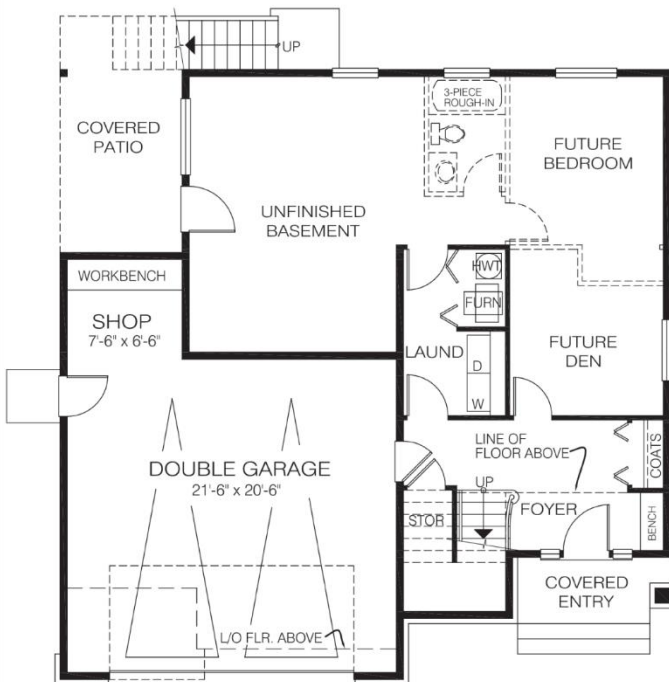
## Dimensions

WIDTH	DEPTH
40	40

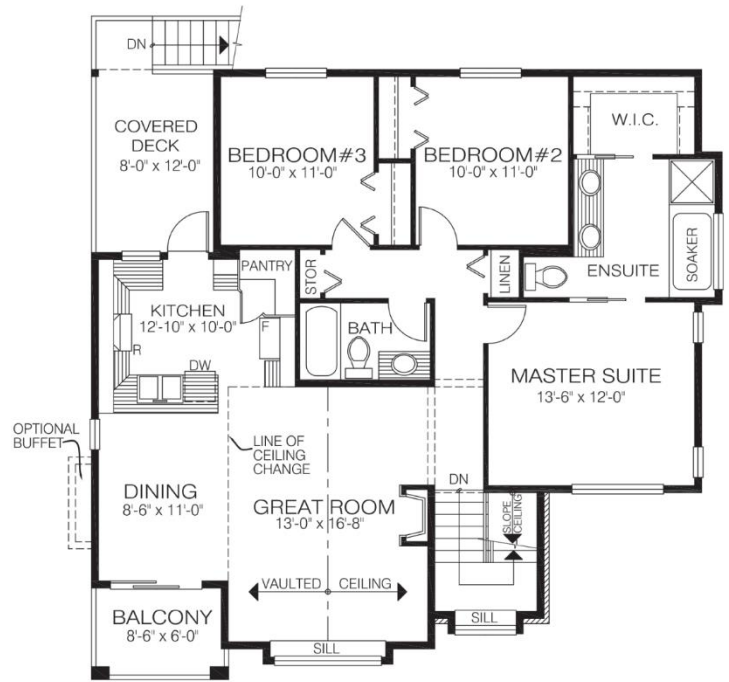
This attractive Craftsman-style home features a ground-floor entrance, with the living area on the main floor. The lower level offers lots of added space that can be finished in the future.

Designs, Images & Plans © Jenish House Designs Limited

### LOWER FLOOR



### MAIN FLOOR



Contact us today for a price quote or details:  
[cedardesigns.com](http://cedardesigns.com) 800-728-4474

**TRADITIONAL:** This home package includes design, construction plans, and all the materials required to build the structure of this home to the lock-up stage. Materials include export-grade framing lumber, an engineered wood truss system, low-maintenance siding and energy-efficient windows. This design features the use of conventional construction methods. It can be modified to suit individual site conditions.

