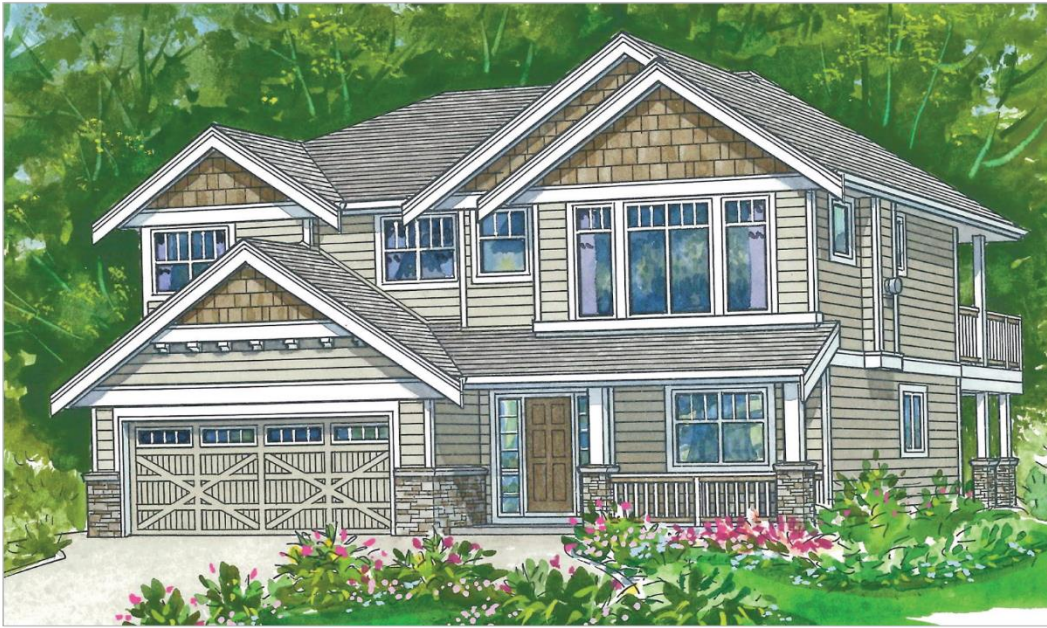


The *Thames* (2-3-750)

TRADITIONAL



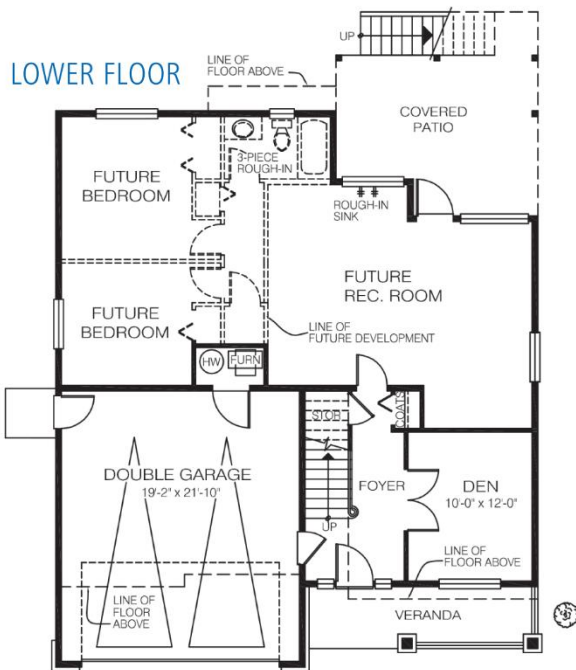
Square Footage	
MAIN FLOOR	1413
UPPER FLOOR	—
LOWER FLOOR	1070
TOTAL LIVING AREA	2483
GARAGE	443
COVERED ENTRY/PORCH	120
BALCONY/DECK	86
TOTAL AREA	3132

Dimensions

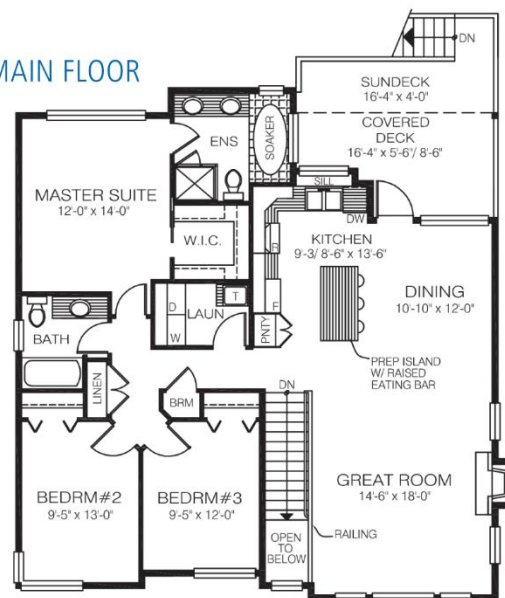
WIDTH	DEPTH
40	46

If a growing family is in your future, this large, comfortable home is ideal. It includes 3 bedrooms on the second floor, plus the possibility of 2 more, as well as a rec room and roughed-in 3-piece bathroom.

Designs, Images & Plans © Jenish House Designs Limited



MAIN FLOOR



Contact us today for a price quote or details:
cedardesigns.com 800-728-4474

TRADITIONAL: This home package includes design, construction plans, and all the materials required to build the structure of this home to the lock-up stage. Materials include export-grade framing lumber, an engineered wood truss system, low-maintenance siding and energy-efficient windows. This design features the use of conventional construction methods. It can be modified to suit individual site conditions.

