

The *Singleton* (7-4-849)

TRADITIONAL



Square Footage

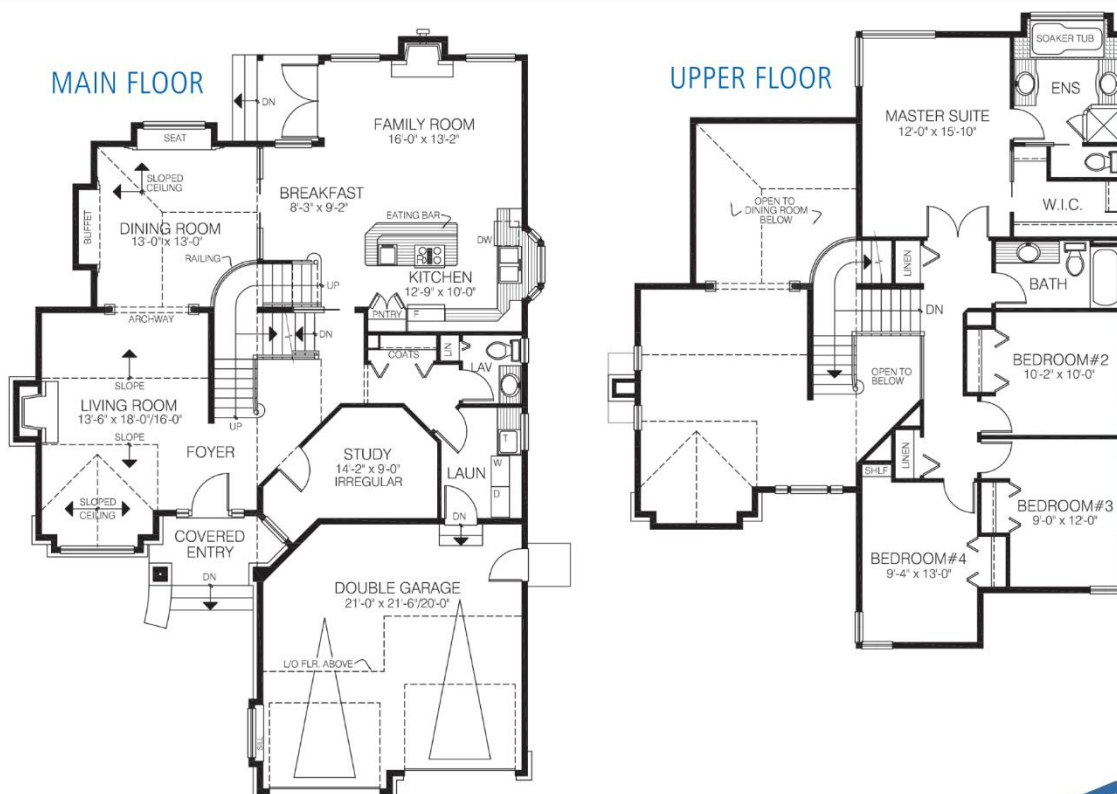
MAIN FLOOR	1335
UPPER FLOOR	1062
LOWER FLOOR	—
TOTAL LIVING AREA	2397
GARAGE	456
COVERED ENTRY/PORCH	85
BALCONY/DECK	—
TOTAL AREA	2938

Dimensions

WIDTH	DEPTH
40	60

Ideal for a narrow lot, but wide-ranging in appeal, the Singleton is a great choice for a family home. With 4 bedrooms and lots of added living space, this home is full of special touches.

Designs, Images & Plans © Jenish House Designs Limited



Contact us today for a price quote or details:
cedardesigns.com 800-728-4474

TRADITIONAL: This home package includes design, construction plans, and all the materials required to build the structure of this home to the lock-up stage. Materials include export-grade framing lumber, an engineered wood truss system, low-maintenance siding and energy-efficient windows. This design features the use of conventional construction methods. It can be modified to suit individual site conditions.

