

# The *Ross* (7-3-891)

TRADITIONAL



Gabled rooflines, a large, pillared porch, and brick accents give this family home instant curb appeal. Inside, the study is a bonus room that could be used as a den or a home office.

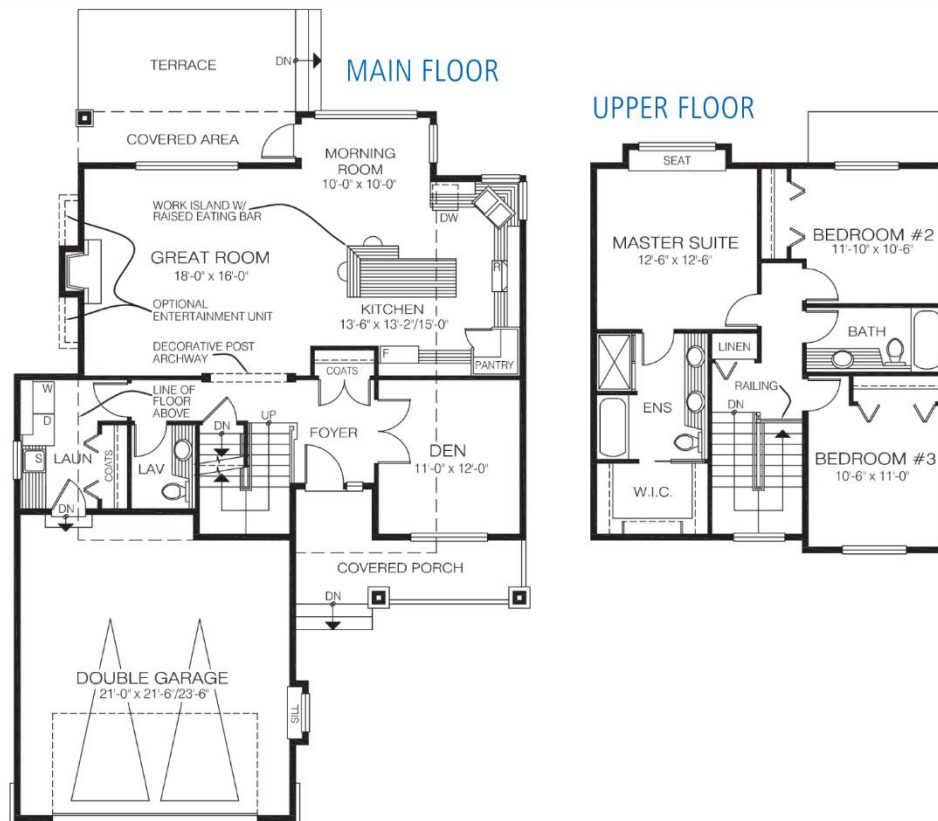
## Square Footage

MAIN FLOOR	1083
UPPER FLOOR	837
LOWER FLOOR	—
TOTAL LIVING AREA	<b>1920</b>
GARAGE	512
COVERED ENTRY/PORCH	182
BALCONY/DECK	—
TOTAL AREA	<b>2614</b>

## Dimensions

WIDTH	DEPTH
40	56

Designs, Images & Plans © Jenish House Designs Limited



Contact us today for a price quote or details:  
[cedardesigns.com](http://cedardesigns.com) 800-728-4474

**TRADITIONAL:** This home package includes design, construction plans, and all the materials required to build the structure of this home to the lock-up stage. Materials include export-grade framing lumber, an engineered wood truss system, low-maintenance siding and energy-efficient windows. This design features the use of conventional construction methods. It can be modified to suit individual site conditions.

