

The *Montview* (7-3-918)

TRADITIONAL



With its front porches, the Montview is ideal for a rear-sloping lot with a front view. Built over an unfinished basement and a recessed garage, it includes a large entertaining and family area.

Square Footage

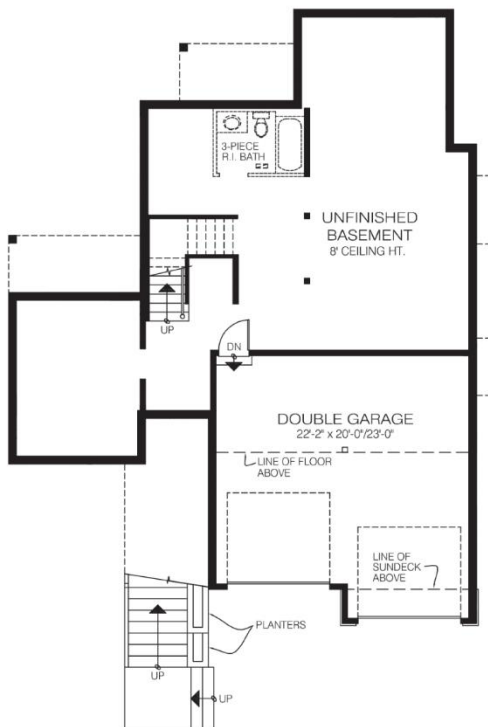
MAIN FLOOR	1178
UPPER FLOOR	894
LOWER FLOOR	974
TOTAL LIVING AREA	3046
GARAGE	513
COVERED ENTRY/PORCH	124
BALCONY/DECK	282
TOTAL AREA	3965

Dimensions

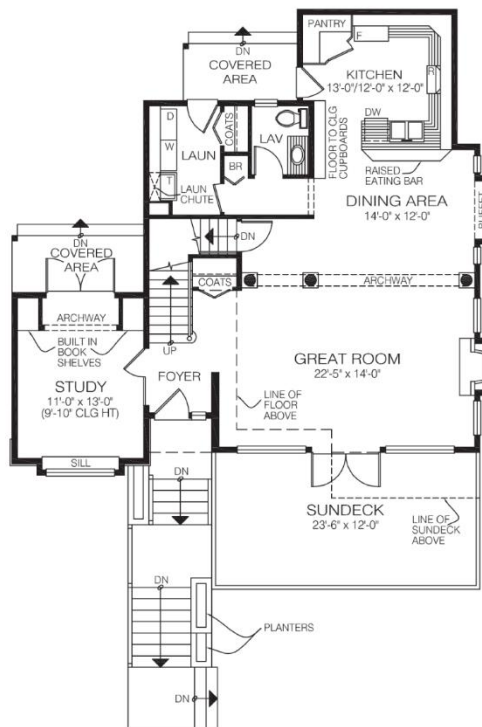
WIDTH	DEPTH
41	54

Designs, Images & Plans © Jenish House Designs Limited

LOWER FLOOR



MAIN FLOOR



UPPER FLOOR



Contact us today for a price quote or details:
cedardesigns.com 800-728-4474

TRADITIONAL: This home package includes design, construction plans, and all the materials required to build the structure of this home to the lock-up stage. Materials include export-grade framing lumber, an engineered wood truss system, low-maintenance siding and energy-efficient windows. This design features the use of conventional construction methods. It can be modified to suit individual site conditions.

