

The *Melrose* (1-2-605)

TRADITIONAL



Double pilasters flank the covered entry of this 2-bedroom family home, giving it a stately look. Outdoor entertaining is part of this design, with sliding doors from the great room to the deck.

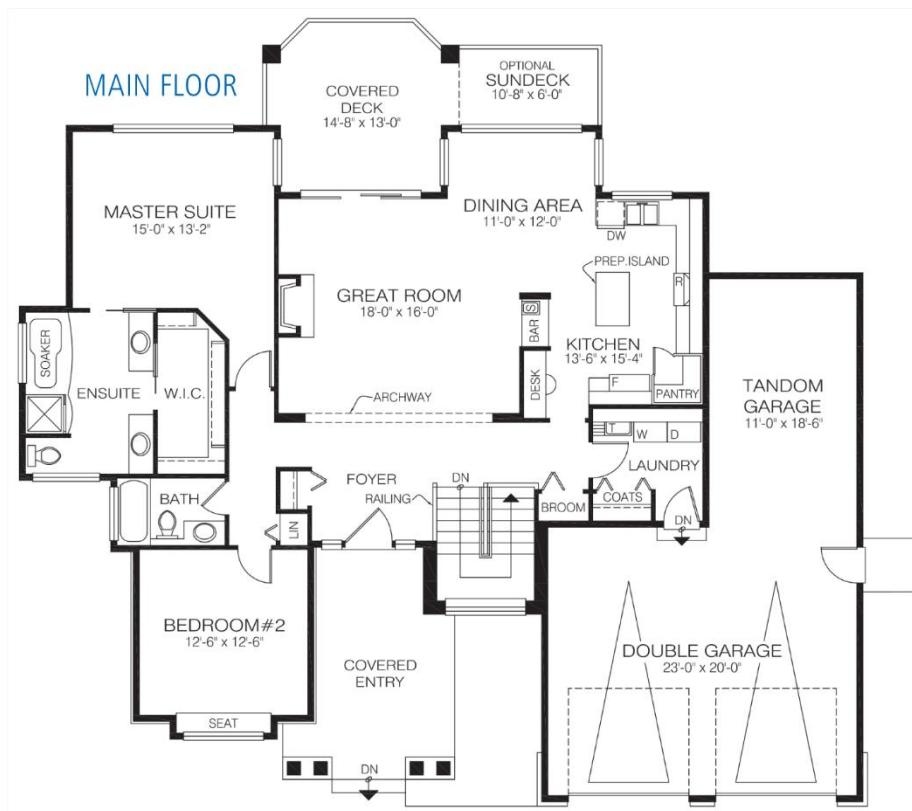
Square Footage

MAIN FLOOR	1646
UPPER FLOOR	—
LOWER FLOOR	—
TOTAL LIVING AREA	1646
GARAGE	708
COVERED ENTRY/PORCH	336
BALCONY/DECK	—
TOTAL AREA	2690

Dimensions

WIDTH	DEPTH
64	57

Designs, Images & Plans © Jenish House Designs Limited



Contact us today for a price quote or details:
cedardesigns.com 800-728-4474

TRADITIONAL: This home package includes design, construction plans, and all the materials required to build the structure of this home to the lock-up stage. Materials include export-grade framing lumber, an engineered wood truss system, low-maintenance siding and energy-efficient windows. This design features the use of conventional construction methods. It can be modified to suit individual site conditions.

