

The *Maynard* (2-3-711)

TRADITIONAL



Practical and attractive, this 3-bedroom home makes an impressive statement. The large great room is a focal point of the Maynard and is sure to be the center of family activities.

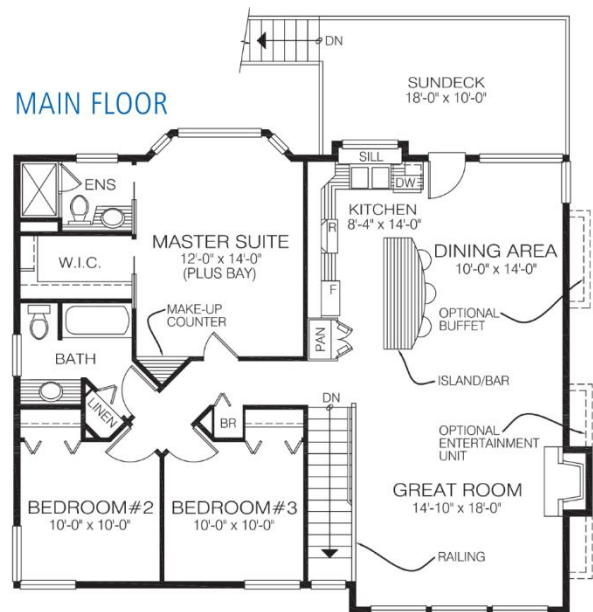
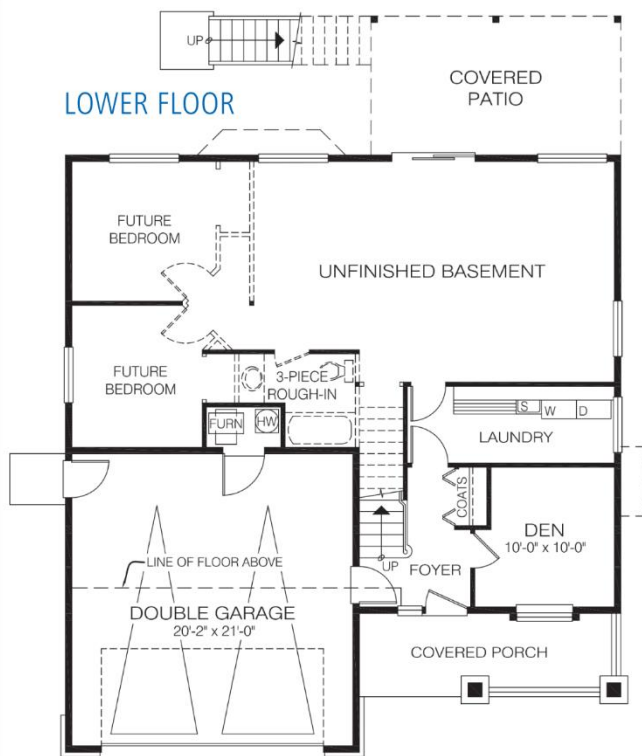
Square Footage

MAIN FLOOR	1276
UPPER FLOOR	—
LOWER FLOOR	1082
TOTAL LIVING AREA	2358
GARAGE	450
COVERED ENTRY/PORCH	113
BALCONY/DECK	180
TOTAL AREA	3101

Dimensions

WIDTH	DEPTH
41	44

Designs, Images & Plans © Jenish House Designs Limited



Contact us today for a price quote or details:
cedardesigns.com 800-728-4474

TRADITIONAL: This home package includes design, construction plans, and all the materials required to build the structure of this home to the lock-up stage. Materials include export-grade framing lumber, an engineered wood truss system, low-maintenance siding and energy-efficient windows. This design features the use of conventional construction methods. It can be modified to suit individual site conditions.

