

The *Kent* (7-3-934A)

TRADITIONAL



Square Footage

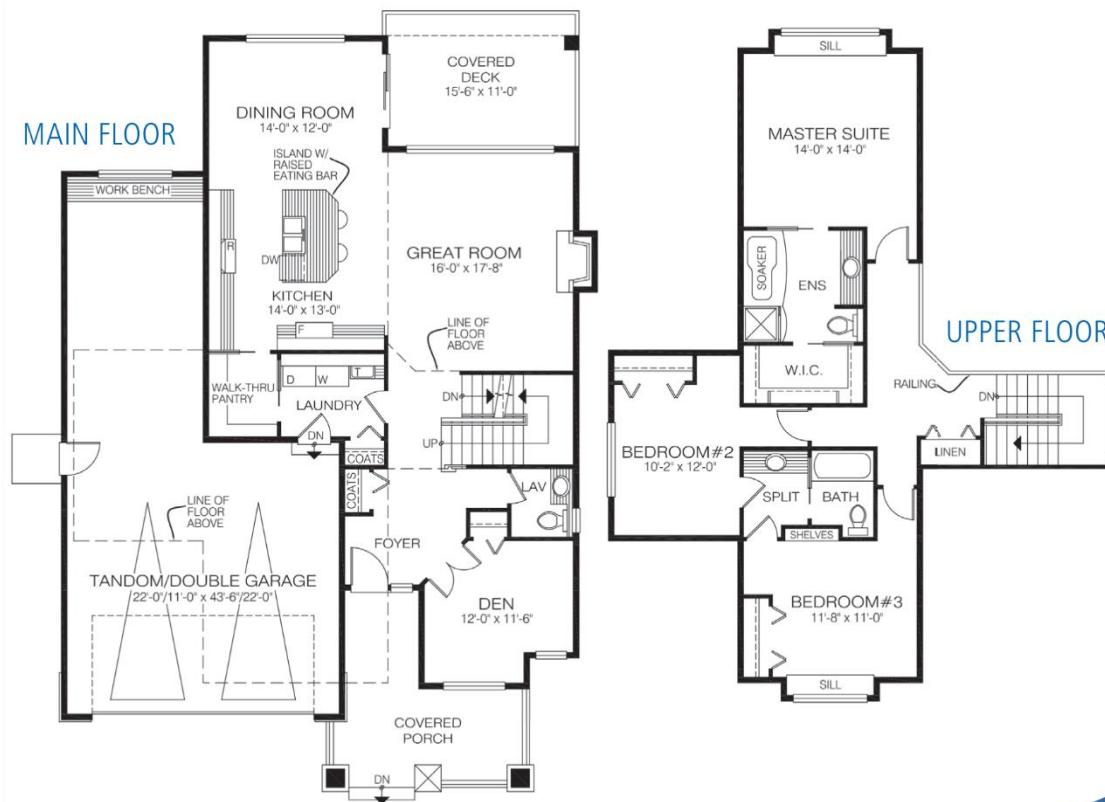
MAIN FLOOR	1195
UPPER FLOOR	1061
LOWER FLOOR	—
TOTAL LIVING AREA	2256
GARAGE	765
COVERED ENTRY/PORCH	316
BALCONY/DECK	—
TOTAL AREA	3337

Dimensions

WIDTH	DEPTH
42	61

This Craftsman-style home is an attribute to any setting. Offering an open-concept layout, it has 3 bedrooms plus a den, with a double-car garage with added room for a large workshop or extra storage.

Designs, Images & Plans © Jenish House Designs Limited



Contact us today for a price quote or details:
cedardesigns.com 800-728-4474

TRADITIONAL: This home package includes design, construction plans, and all the materials required to build the structure of this home to the lock-up stage. Materials include export-grade framing lumber, an engineered wood truss system, low-maintenance siding and energy-efficient windows. This design features the use of conventional construction methods. It can be modified to suit individual site conditions.

