

# The *Hutton* (7-3-929)

TRADITIONAL



The slightly stepped-back, double-car garage gives the Hutton a unique appeal. Together with the shakes and appealing wood accents below the gables, this home commands attention.

## Square Footage

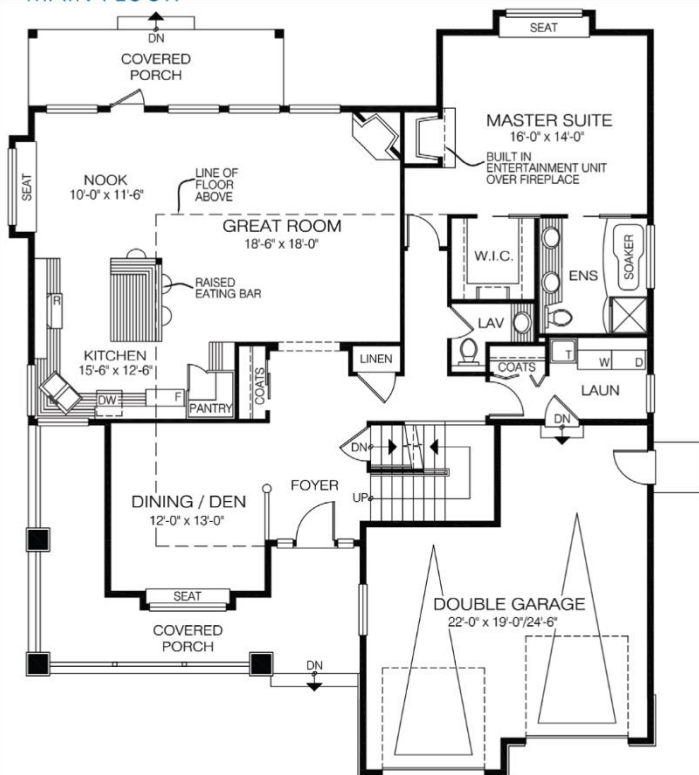
MAIN FLOOR	1658
UPPER FLOOR	879
LOWER FLOOR	—
<b>TOTAL LIVING AREA</b>	<b>2537</b>
GARAGE	515
COVERED ENTRY/PORCH	385
BALCONY/DECK	—
<b>TOTAL AREA</b>	<b>3437</b>

## Dimensions

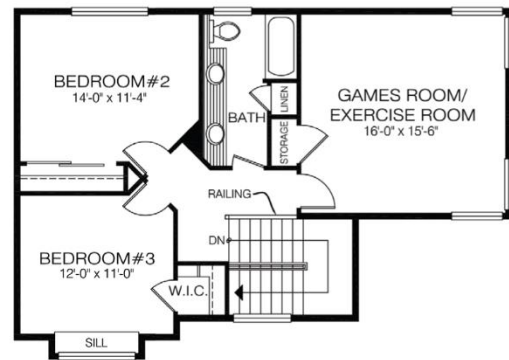
WIDTH	DEPTH
49	59

Designs, Images & Plans © Jenish House Designs Limited

### MAIN FLOOR



### UPPER FLOOR



Contact us today for a price quote or details:  
[cedardesigns.com](http://cedardesigns.com) 800-728-4474

**TRADITIONAL:** This home package includes design, construction plans, and all the materials required to build the structure of this home to the lock-up stage. Materials include export-grade framing lumber, an engineered wood truss system, low-maintenance siding and energy-efficient windows. This design features the use of conventional construction methods. It can be modified to suit individual site conditions.

