

The *Gilroy* (1-2-652)

TRADITIONAL



The Gilroy is ideal for a walk-out lot. With its wonderful Craftsman exterior – including shakes, as well as window and roof accents – this small but memorable home will complement any building lot.

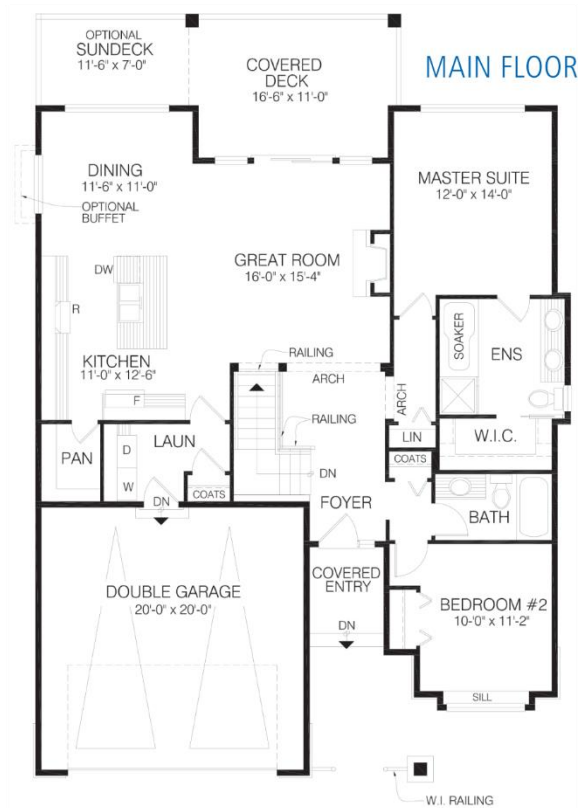
Square Footage

| | |
|----------------------------|-------------|
| MAIN FLOOR | 1388 |
| UPPER FLOOR | — |
| LOWER FLOOR | — |
| TOTAL LIVING AREA | 1388 |
| GARAGE | 430 |
| COVERED ENTRY/PORCH | 211 |
| BALCONY/DECK | — |
| TOTAL AREA | 2029 |

Dimensions

| | |
|-------|-------|
| WIDTH | DEPTH |
| 40 | 59 |

Designs, Images & Plans © Jenish House Designs Limited



Contact us today for a price quote or details:
cedardesigns.com 800-728-4474

TRADITIONAL: This home package includes design, construction plans, and all the materials required to build the structure of this home to the lock-up stage. Materials include export-grade framing lumber, an engineered wood truss system, low-maintenance siding and energy-efficient windows. This design features the use of conventional construction methods. It can be modified to suit individual site conditions.

