

The Edgemont (7-3-922)

TRADITIONAL



The Edgemont is unique with its lower floor, double-car garage, as well as main floor sundeck. This large home fits beautifully on a subdivision lot. It's an exciting addition to any neighborhood.

Square Footage

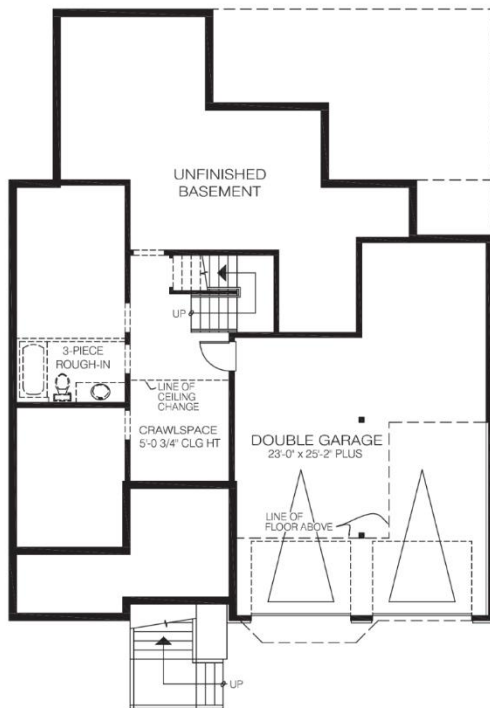
| | |
|----------------------------|-------------|
| MAIN FLOOR | 1570 |
| UPPER FLOOR | 507 |
| LOWER FLOOR | 890 |
| TOTAL LIVING AREA | 2967 |
| GARAGE | 715 |
| COVERED ENTRY/PORCH | 199 |
| BALCONY/DECK | 298 |
| TOTAL AREA | 4179 |

Dimensions

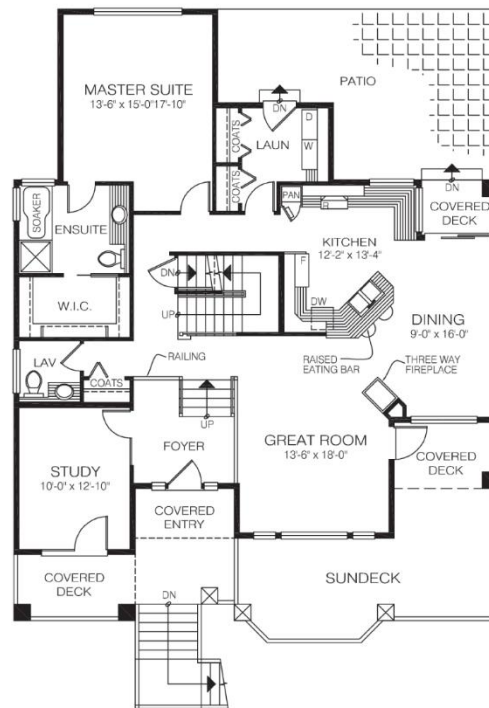
| | |
|-------|-------|
| WIDTH | DEPTH |
| 44 | 56 |

Designs, Images & Plans © Jenish House Designs Limited

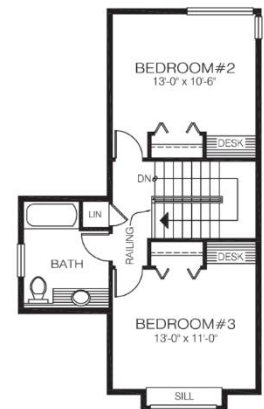
LOWER FLOOR



MAIN FLOOR



UPPER FLOOR



Contact us today for a price quote or details:
cedardesigns.com 800-728-4474

TRADITIONAL: This home package includes design, construction plans, and all the materials required to build the structure of this home to the lock-up stage. Materials include export-grade framing lumber, an engineered wood truss system, low-maintenance siding and energy-efficient windows. This design features the use of conventional construction methods. It can be modified to suit individual site conditions.

