

The *Dunedin* (6-4-347)

TRADITIONAL



Dormer windows and a wraparound veranda give this home Victorian-style charm. The interior offers all the amenities that appeal to active families. The spacious great room features a vaulted ceiling and decorative windows.

Square Footage

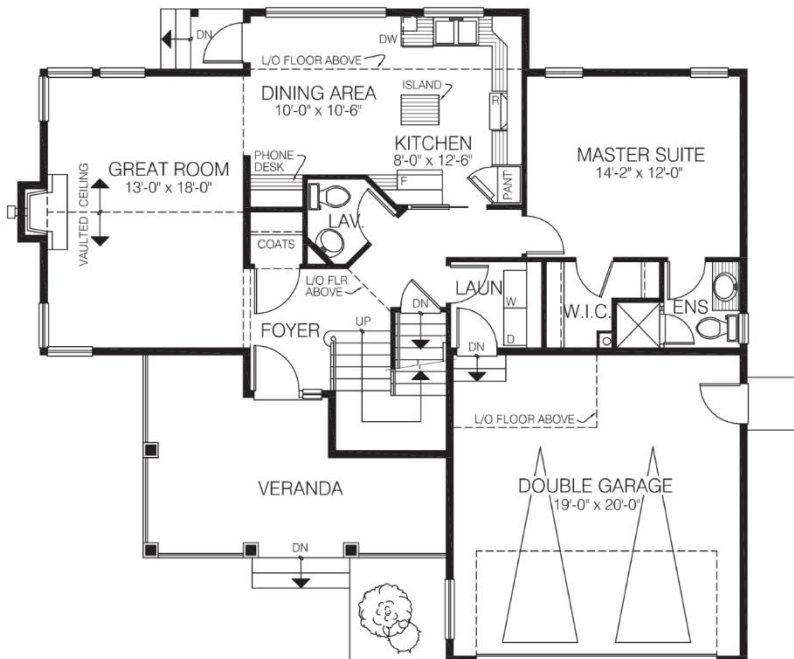
MAIN FLOOR	1040
UPPER FLOOR	699
LOWER FLOOR	—
TOTAL LIVING AREA	1739
GARAGE	406
COVERED ENTRY/PORCH	216
BALCONY/DECK	—
TOTAL AREA	2361

Dimensions

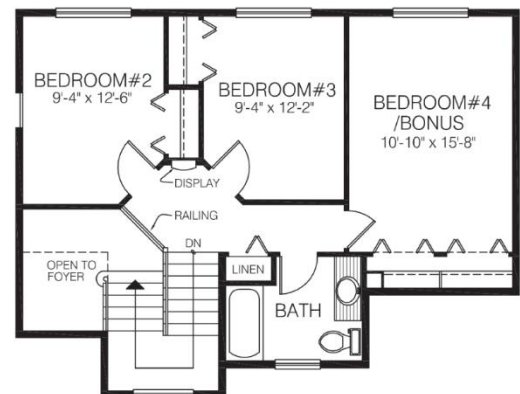
WIDTH	DEPTH
47	44

Designs, Images & Plans © Jenish House Designs Limited

MAIN FLOOR



UPPER FLOOR



Contact us today for a price quote or details:
cedardesigns.com 800-728-4474

TRADITIONAL: This home package includes design, construction plans, and all the materials required to build the structure of this home to the lock-up stage. Materials include export-grade framing lumber, an engineered wood truss system, low-maintenance siding and energy-efficient windows. This design features the use of conventional construction methods. It can be modified to suit individual site conditions.

