

The *Canby* (7-4-955)

TRADITIONAL



This 2-storey, 4-bedroom home exudes plenty of charm, and also contains all the amenities that today's modern families expect. Natural light can flood into both the dining room and the great room through large windows.

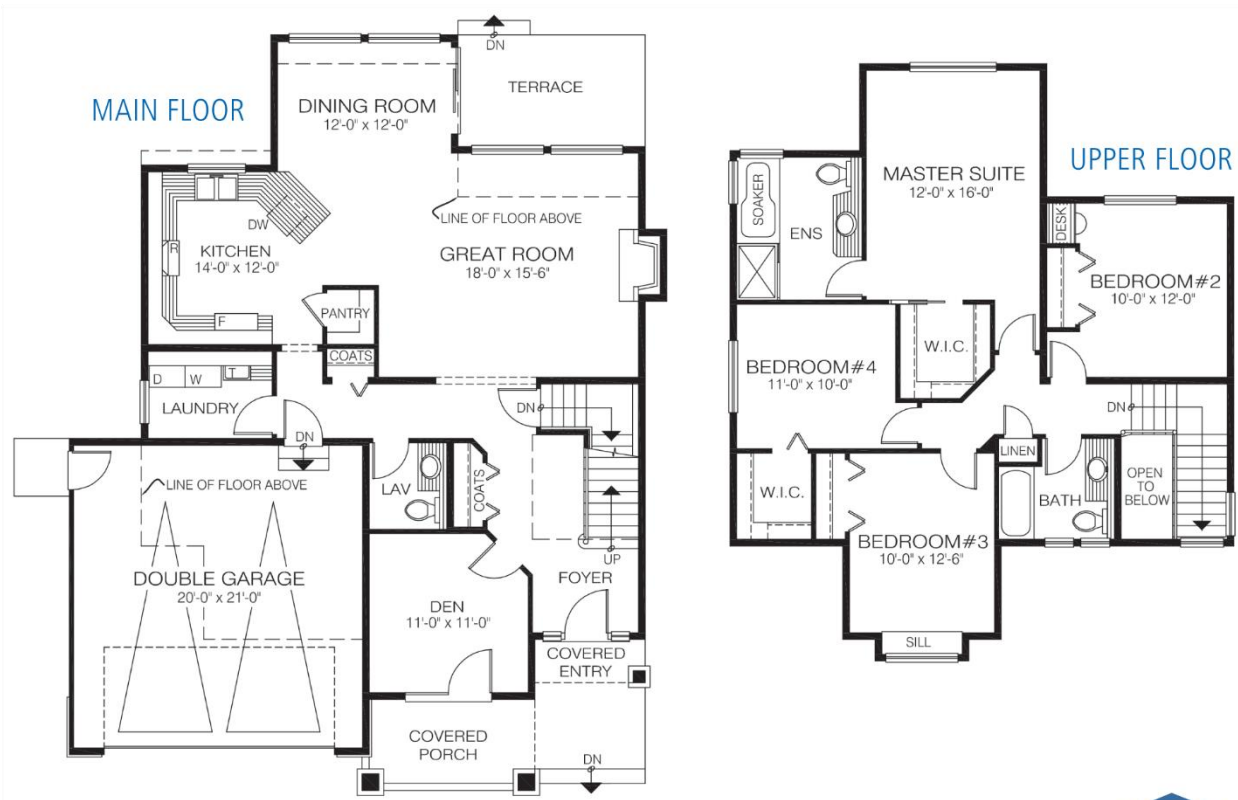
Square Footage

MAIN FLOOR	1138
UPPER FLOOR	1043
LOWER FLOOR	—
TOTAL LIVING AREA	2181
GARAGE	442
COVERED ENTRY/PORCH	97
BALCONY/DECK	—
TOTAL AREA	2720

Dimensions

WIDTH	DEPTH
40	53

Designs, Images & Plans © Jenish House Designs Limited



Contact us today for a price quote or details:
cedardesigns.com 800-728-4474

TRADITIONAL: This home package includes design, construction plans, and all the materials required to build the structure of this home to the lock-up stage. Materials include export-grade framing lumber, an engineered wood truss system, low-maintenance siding and energy-efficient windows. This design features the use of conventional construction methods. It can be modified to suit individual site conditions.

